



Innovation
that excites

NISSAN NP300 HARDBODY



NISSAN
NP300
HARDBODY

NSC STAMP:



PROVEN HARDBODY

CONTENTS

- 01 DURABILITY
- 03 PERFORMANCE
- 05 MADE FOR BUSINESS
- 09 IRONCLAD PROTECTION
- 11 TAILORED TO YOUR REQUIREMENTS
- 13 COLOUR AND TRIM
- 14 DIMENSIONS
- 15 SPECIFICATIONS

PROVEN DURABILITY

AFRICAN BORN, AFRICAN HARDENED

Tested in the most unforgiving conditions Africa has to offer, the NISSAN NP300 HARDBODY has proven over the years that it's made to last. Specifically engineered for harsh environments, all NP300 HARDBODY models incorporate a heavy duty axle with reinforced chassis and suspension to absorb the impact of the toughest terrain.

The NISSAN NP300 HARDBODY has a backbone to match, too. A full-length, closed section ladder-type frame with high-tensile-strength steel – stronger than conventional steel – in strategic areas ensures improved structural rigidity. This means increased torsional stiffness, helping to deliver enhanced performance on- and off-road, whatever the load. Further proof that the NISSAN NP300 HARDBODY is the pickup built to tackle any challenge Africa has to offer.



2WD Single Cab Base Grade



4WD Single Cab Mid Grade



4WD Double Cab Mid Grade



2WD and 4WD Double Cab High Grade





PROVEN PERFORMANCE

BUILT FOR THE LONG HAUL, DESIGNED TO PERFORM

ENGINE

Nissan diesel engines have built an enviable reputation for clean firing, smoother acceleration and drivability, resulting in impressive fuel efficiency with reduced emissions. The result is a quieter ride with less vibration, wear and tear and an overall decrease in maintenance costs. And the eco-friendly oil cartridges can be completely incinerated after use, making our engines as environmentally responsible as they are hard working.

The NISSAN NP300 HARDBODY's intercooled 2.5 litre common rail turbo diesel engine balances toughness and power with excellent fuel efficiency, using the combination of turbo and intercooler to deliver 98kW (131.4hp) of power and 304Nm (30.7 kg-m) of torque.

DRIVE TRAIN

Clean and easy shift changes are provided by the 5-speed manual transmission, and a braking systems load-sensing valve increases brake power to the rear when moving large loads, ensuring the NP300 HARDBODY makes light work of the toughest jobs.

Engaging 4WD locks the transfer case in a 50/50 torque split for maximum traction from front and rear axles. Auto locking hubs on the NISSAN NP300 HARDBODY higher grade 4WD models come standard, while the driver can manually lock the front wheel hubs on base and mid grade models to ensure that all four wheels are driven. Releasing the hubs when not required allows the wheels to turn free from the axle, improving fuel economy.

LIMITED SLIP DIFFERENTIAL

4WD models come standard with a Limited Slip Differential which automatically transfers torque to the non-slipping drive wheel, allowing you to power out of virtually any situation. And unlike diff lock, it won't lead to expensive breakages due to negligence and can work at speed.

PROVEN_

MADE FOR

BUSINESS

INSIDE AND OUT, THE NISSAN NP300 HARDBODY IS DESIGNED TO KEEP YOUR BUSINESS MOVING IN THE RIGHT DIRECTION

RUGGED EXTERIOR

The NISSAN NP300 HARDBODY's build quality and robustness extends to the exterior finishes too: developed and tested by firing diamond chips at the paintwork ensures maximum protection from flying gravel or stone. In addition, the all-round E-coat anti-rust treatment means that it can cope in extreme damp or humid conditions.

The pickup's masculine presence is enhanced in higher grade models with a roll bar, side steps, roof rail and a chrome rear step bumper, while workhorse models come standard with a guard frame for extra cab protection when carrying loads. Add the reinforced load box, extra-strength tailgate chains, double-walled tailgate and rear side panels and sturdy cargo hooks, and it becomes clear that the NP300 HARDBODY really means business.

All diesel models feature a bonnet scoop that increases airflow into the turbo charger's intercooler, and hints at the formidable power beneath the hood. The long travel suspension with 15" steel wheels on the 2WD Single Cab, and 16" alloy wheels on all other models, allows for excellent ground clearance and the confidence to handle almost any African terrain.

VERSATILE INTERIOR

Comfort and functionality on all models are provided by tilt adjustable and power steering, and sliding front seats make getting in as easy as getting out.

A range of additional features are available depending on the model and grade: lockable glove box and door pocket with drinks holder, air-conditioner, radio with CD player, centre console with cup holders and power windows.

PROVEN PARTNERSHIP

The NISSAN NP300 HARDBODY remains the ideal choice of business partner in the commercial sector. Its dependable heritage has been built on well-proven mechanical underpinnings while fulfilling – and often going beyond – the essential functional systems requirements of today's business operations.

With a proud history of solid durability and reliability, together with strong after-sales support, skilled technicians and readily available parts, downtime is reduced to a minimum. This, together with the economical total cost of ownership, ensures your business stays firmly where it belongs – on the road.





NISSAN NP300 HARDBODY

NP300

HARDBODY

PROVEN IRONCLAD PROTECTION

THE NISSAN NP300 HARDBODY MAKES SAFETY AND SECURITY A PRIORITY



SAFETY SHIELD

SAFETY SHIELD

Nissan designs its vehicles to protect driver and passengers with a shield made up of various safety measures. In the commitment to "Real World Safety", Nissan pursues innovation as part of its Safety Shield concept. Based on the idea that cars should help protect people; advanced and proactive safety technologies help driver and passengers to avoid danger and injury.



SAFETY

A steel reinforced chassis provides strength and absorbs the force from the front, while crease folds minimise impact in the cabin and side door intrusion bars add further protection to occupants in the event of an accident. Add driver and passenger airbags, in conjunction with the 3-point ELR seatbelt, and you are assured of the maximum protection all round.

For greater handling and control, the NP300 HARDBODY comes with fade resistant shock absorbers, ventilated front discs and a rugged double wishbone and independent suspension with telescopic shock absorbers, while the Anti-lock Braking System optimises braking performance.

With higher ground clearance and halogen headlamps for all-round visibility, you can be confident that both your people and your cargo are in safe hands.



SECURITY

The NISSAN NP300 HARDBODY makes security a priority. Standard in top of the range models are remote, keyless entry, central locking and child locks. And throughout the range, immobiliser, personally coded ignition key and fuel tank cap key are standard. For more detailed information on features, please see the specifications table.





PROVEN TAILORED TO YOUR REQUIREMENTS

ALL THE EXTRAS YOU NEED FOR THE PERFECT FIT

You know what you like. And with Nissan approved accessories you can customise your NP300 HARDBODY to perfectly fit your needs, whether it's functional style you're looking for or enhanced utilitarian capability.

Speak to your Nissan dealer for more information on the full range.

Some accessories are not compatible with all model grades.

Accessories available include:

- Tonneau Cover
- Towing Kit
- Canopy
- Loadbox rubberising
- Spare wheel locks
- Sports Bars
- Side Steps
- Bonnet and Headlamp guards
- Carpet sets
- Wraparound bushbar
- Nudgebar



COLOUR AND TRIM



Arctic White - **QM1** (S)



Bright Silver - **KY0** (M)



Thermal Gold - **K32** (M)



Infinite Black - **KH3** (S)*



Starling Blue - **B16** (M)



Solid Red - **AX6** (S)*

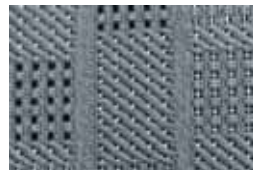


Claret Red - **AY4** (M)

TRIM OPTIONS



PVC



Woven fabric



Fabric with leather insert

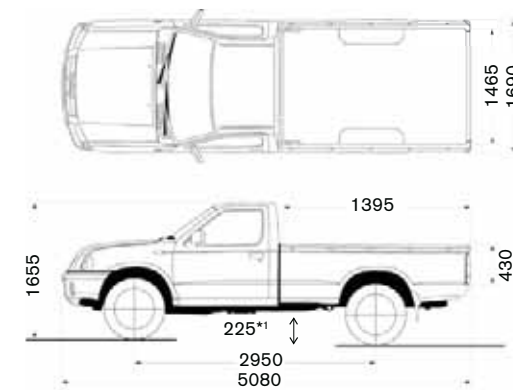
Nissan's commitment to quality

To provide all customers with a consistently high level of quality, Nissan applies the same standards worldwide, to ensure that all Nissan owners enjoy peace of mind for the lifespan of their vehicles. The approach is based on quality from the customer's perspective on three key elements. First, the expectation of a smooth driving experience with complete peace of mind. Second, the intangible appeal of a vehicle, its power to captivate and excite, with features that capture attention and imagination. Third, the level of attentiveness and service during the sales process, and long after the sale is concluded.

DIMENSIONS

SINGLE CAB

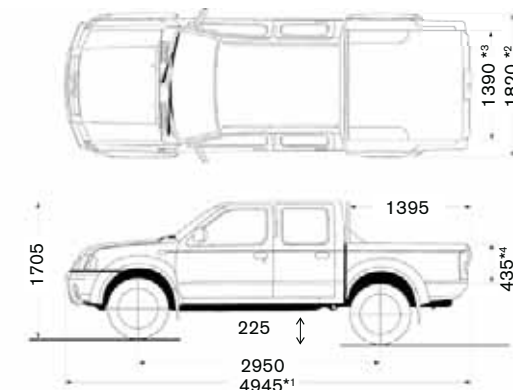
Unit: mm



*1 2WD 205mm

DOUBLE CAB

Unit: mm



*1 STD Grade 5080mm

*2 STD Grade 1690mm

*3 STD Grade 1465mm

*4 STD Grade 430mm



Model Description	SINGLE CAB		DOUBLE CAB			
	SC 2WD 2.5i Diesel (Base)	SC 4WD 2.5i Diesel (Mid)	DC 2WD 2.5i Diesel (High)	DC 4WD 2.5i Diesel (Mid)	DC 4WD 2.5i Diesel (Mid with Safety Pack)	DC 4WD 2.5i Diesel (High)
Tracking Code	AR001	AR002	AR003	AR004	AR005	AR006
Drivetrain and fuel type	2WD Diesel	4WD Diesel	2WD Diesel	4WD Diesel	4WD Diesel	4WD Diesel
Grade	Base	Mid	High	Mid	Mid	High
ENGINE						
Engine code	YD25		YD25			
Displacement (cm³)	2488		2488			
Max power output (kW/rpm)	98/3600		98/3600			
Max torque (Nm/rpm)	304/2000		304/2000			
Type	Intercooled turbo diesel, 4-cyl. In-line, DOHC		Intercooled turbo diesel, 4-cyl. In-line, DOHC			
Compression ratio	16.5:1		16.5:1			
TRANSMISSION AND DRIVETRAIN						
Transmission	5-Speed Manual		5-Speed Manual			
Gear ratios: 1st	3.58		3.58			
Gear ratios: 2nd	2.077		2.077			
Gear ratios: 3rd	1.36		1.36			
Gear ratios: 4th	1		1			
Gear ratios: 5th	0.76		0.76			
Final drive Ratio	3.9	3.7	3.7			
Diff lock	Standard	-	-			
Limited Slip Differential (LSD)	-	Standard	-	Standard		
HANDLING						
Brakes	Front	Ventilated Disc		Ventilated Disc		
	Rear	Drum		Drum		
	Anti-lock Braking System (ABS)	-	Standard	Standard	-	Standard
Suspension	Front	Independent double wishbone torsion bar with telescopic shock absorbers		Independent double wishbone torsion bar with telescopic shock absorbers		
	Rear	Solid axle, leaf spring with telescopic shock absorbers		Solid axle, leaf spring with telescopic shock absorbers		
Steering	Power assistance	Standard		Standard		
	Height adjustment steering wheel (tilt)	Standard		Standard		
	Turning radius (tyres, m)	5.9	6.3	5.9	6.3	
	Turning radius (body, m)	6.4	6.7	6.4	6.7	
SAFETY AND SECURITY						
Driver and passenger airbags	-	Standard	Standard	-	Standard	Standard
Seat belt (front)	3-point inertia reel		3-point inertia reel			
Side impact protection	Door guard bar		Door guard bar			
Headlamps	Halogen		Halogen			
Fog lamps	-	-	Standard	-	-	Standard
Central locking (remote control)	-	-	Standard	-	-	Standard
Anti-theft device (Immobilizer)	-	-	Standard	-	-	Standard

LOAD AND DIMENSIONS	SINGLE CAB		DOUBLE CAB				
	Fuel tank capacity (litres)	75		75			
Wheels	Tyre size	215R15	255/70R16	255/70R16			
	Wheel size	15"	16"	16"			
	Wheel finish	Steel	Aluminium	Aluminium			
Gross Vehicle Mass (kg)	2730	2740	2730	2740			
Gross Combination Mass (kg)	3730	4240	4730	4240	4240	5740	
Load and tow	Tare (kg)	1563	1728	1731	1816	1844	
	Load Capacity (kg) (GVM - Tare)	1167	1012	999	924	896	
	Towing capacity (kg): Unbraked	750		750			
	Towing capacity (kg): Trailer with overrun brake	1000	1500	2000	1500	1500	3000
Dimensions	Ground clearance (mm)	205	225	225			
	Overall Length (mm)	5080		4945	5080	4945	
	Width (mm)	1690		1820	1690	1820	
	Height (mm)	1655		1705			
	Wheelbase (mm)	2950		2950			
	Front track (mm)	1395		1395			
	Rear track (mm)	1390		1390			
	Loadbox length (mm)	1395		1395			
	Loadbox width (mm)	1465		1390	1465	1465	1390
	Loadbox depth (mm)	430		435	430	430	435
INTERIOR COMFORT AND CONVENIENCE							
Air conditioner	-	Standard	Standard				
Power windows	-	-	Standard	-	-	Standard	
Storage	Lockable glove box	Standard		Standard			
	Centre console	-	-	Standard	-	Standard	
	Door pockets	Standard		Standard			
Cup holders	-	-	Standard	-	-	Standard	
Seat type (front seats)	Bench		Separate Bucket Seat				
Trim	Carpet floor cover	Standard		Standard			
	Seat material	PVC		Leather touch and fabric	Woven fabric	Woven fabric	Leather touch and fabric
Radio with CD front loader	-	-	Standard	-	Standard	Standard	
EXTERIOR BODY AND STYLING							
Roll bar	-	-	Standard	-	-	Standard	
Cab protector (guard frame)	Standard		-	Standard	Standard	-	
Front bumper	Black		Body colour	Black	Black	Body colour	
Rear bumper	Black tube type	Chrome step type	Chrome step type	Chrome step type	Chrome step type	Chrome step type	
Over fenders	-	Black	Body colour	Black	Black	Body colour	
Mud guards/flaps front	-	Standard	Standard				
Mud guards/flaps rear	Standard		Standard				
Mirror	Black, manual adjustment		Chrome, power adjustment	Black, manual adjustment		Chrome, power adjustment	
Side Steps	-	-	Standard	-	-	Standard	
Roof rack/roof rail	-	-	Standard	-	-	Standard	
Load box hooks/fastener	Outer hooks		Smooth loadbed, inner hook				



Nissan's environmental philosophy embraces people, vehicles and nature. In the pursuit of a sustainable mobile society, the NISSAN GREEN PROGRAM aims to reduce the environmental impact of NISSAN vehicles at every stage of the vehicles life cycle, while corporate activities address environmental challenges.

Nissan reserves the right to make any changes without notice concerning colours, equipment, or specifications detailed in this brochure, or to discontinue individual models. The colours of vehicles in this brochure may differ slightly from those delivered. The specifications vary for different countries depending on market conditions. Please consult your local dealer to ensure that the vehicle delivered accords with your expectations.